

# BUSINESS



# ALLIANCE



Submit your information online at [timberwolves.com/businessalliance](http://timberwolves.com/businessalliance) or return this form to **Business Alliance, 600 First Avenue North, Minneapolis, MN 55403.**

Account #: \_\_\_\_\_

Primary account holder name: \_\_\_\_\_

Company or Employer: \_\_\_\_\_

Address: \_\_\_\_\_

City, State, Zip: \_\_\_\_\_

Phone number: \_\_\_\_\_

Email: \_\_\_\_\_

Website: \_\_\_\_\_

Company Industry: \_\_\_\_\_

**Description of your business, products and services:**

---

---

---

---

---

**Please list a special offer you would like to extend to all Timberwolves Members**

**Example: Receive 10% off service by showing your Timberwolves Membership Card.**

---

---

---

---

---

**Your team representative will contact you to confirm the submission.**

The information submitted will not change the information on your account. This directory is created solely as a season ticket member benefit. Business information will not be used for solicitation by the Minnesota Timberwolves or its partners.

# BUSINESS



# ALLIANCE



The Timberwolves Business Alliance is a network of team partners and their businesses. Use this platform to maximize your Timberwolves investment by increasing exposure for your organization. Network with local professionals, share best practices and use the Timberwolves as a vehicle to build your book of business.

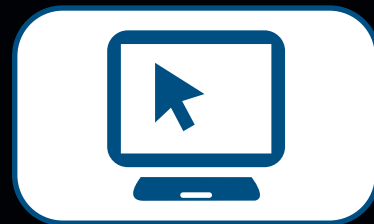
## NETWORKING

*Build relationships and generate business opportunities.*



## ONLINE DIRECTORY

*A go-to list of team partners and their businesses on timberwolves.com.*



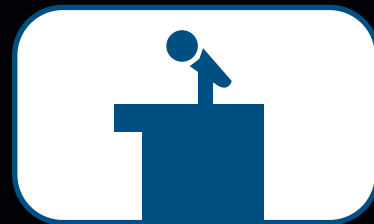
## PROMOTIONAL OFFERS

*Increase exposure and drive traffic to your business through special offers.*



## SPEAKER SERIES

*Engaging discussions from local business leaders.*



# Join Today!

[timberwolves.com/businessalliance](http://timberwolves.com/businessalliance) | 612.673.8373