



# 2007-08 SEATTLE SONICS COURTSIDE SEATING



VIP 15/13-16		
Section	Per Seat	43 Games
BB	\$400	\$17,200
CC	\$375	\$16,125
DD	\$245	\$10,535

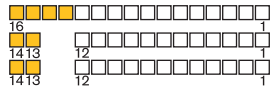
VIP 15/1-12		
Section	Per Seat	43 Games
BB	\$305	\$13,115
CC	\$285	\$12,255
DD	\$225	\$9,675

VIP 14		
Section	Per Seat	43 Games
AA	\$925	\$39,775
BB	\$465	\$19,995
CC	\$350	\$15,050
DD	\$285	\$12,255

VIP 13		
Section	Per Seat	43 Games
BB	\$305	\$13,115
CC	\$285	\$12,255
DD	\$225	\$9,675

DNP 14/AA/34-35		
Section	Per Seat	43 Games
AA	\$1500	\$64,500

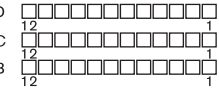
SECTION VIP 15



SECTION VIP 14



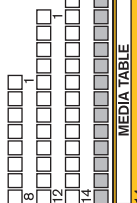
SECTION VIP 13



DNP 14/AA/1-4		
Section	Per Seat	43 Games
AA	\$1500	\$64,500

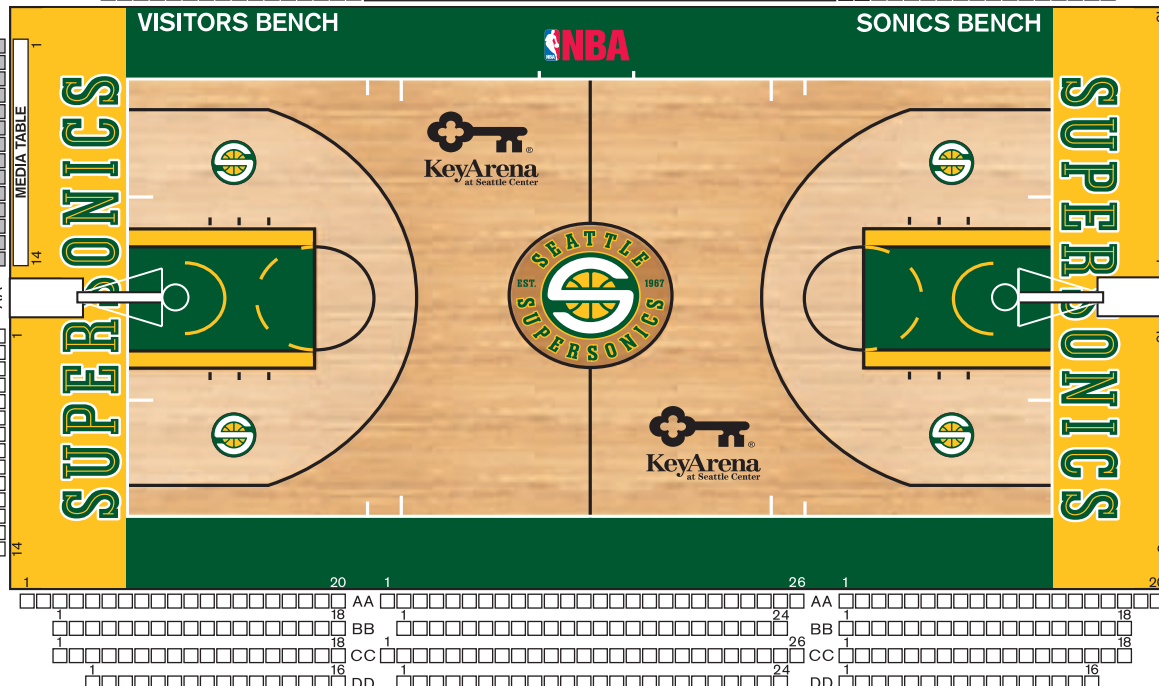
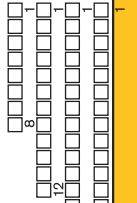
VIP 20		
Section	Per Seat	43 Games
AA	\$825	\$35,475
BB	\$375	\$16,125
CC	\$285	\$12,255
DD	\$225	\$9,675

SECTION VIP 20



VIP 22		
Section	Per Seat	43 Games
AA	\$825	\$35,475
BB	\$375	\$16,125
CC	\$285	\$12,255
DD	\$225	\$9,675

SECTION VIP 22



VIP 8		
Section	Per Seat	43 Games
AA	\$825	\$35,475
BB	\$375	\$16,125
CC	\$285	\$12,255
DD	\$225	\$9,675

SECTION VIP 8

SECTION VIP 6

VIP 6		
Section	Per Seat	43 Games
AA	\$825	\$35,475
BB	\$375	\$16,125
CC	\$285	\$12,255
DD	\$225	\$9,675

SECTION VIP 27

VIP 27		
Section	Per Seat	43 Games
AA	\$825	\$35,475
BB	\$375	\$16,125
CC	\$285	\$12,255
DD	\$225	\$9,675

SECTION VIP 28

VIP 28		
Section	Per Seat	43 Games
AA	\$925	\$39,775
BB	\$465	\$19,995
CC	\$350	\$15,050
DD	\$285	\$12,255

SECTION VIP 1

VIP 1		
Section	Per Seat	43 Games
AA	\$825	\$35,475
BB	\$375	\$16,125
CC	\$285	\$12,255
DD	\$225	\$9,675

Court illustration represents seating configuration and is not drawn to exact scale